

IS IT A GOOD PLACE TO HEAR AT HOME?



Different situations can be hard when you are trying to listen.

Every one of us has probably experienced environments where it is easier to hear and others that were harder. For children who are hard of hearing, different environments can make listening really tough.



In these activities, your child will learn to scan the environment and decide if they are easy or hard for listening. Older children can examine various parts of the listening environment and talk about how these can affect communication.

[Getting to the Heart of Listening Around the House](#)

This link provides parents with information about noises around the house that may make it hard for your child to listen. It also offers tips on how to make your home a friendlier listening environment for your child.

Rate Your Listening in Common Home Spaces

EASY—1-2-3-4-5-6-7-8-9-10 – HARD

Instructions:

The number 1 represents the rating for the easiest listening space and 10 represents the rating for the hardest listening space. Have your child look at the images that represent a common listening space in most homes and have them rate (on a scale of 1-10) the image by how easy their listening experience was in each area of the home. Once they have given each space a rating have them explain why each situation was difficult or easy (e.g., number of people, background noise, set up of the room etc.).

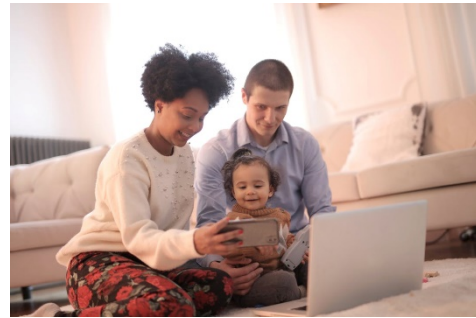
Home Space	Number	Reason why?
1. Kitchen		
2. Living Room (with the TV on)		
3. Living Room (no TV)		
4. Dining Room		
5. Bathroom		
6. Bedroom		
7. Outside in the yard		
8. The stairs		

Rate Your Listening in Common Home Spaces

Kitchen



Living Room (with the TV on)



Living Room



Dining Room



Bathroom (water running)



Bedroom



Yard





The stairs



Rate Your Listening in Common Home Spaces

Instructions:

1. Cut out the images for Listening in Common Home Spaces
2. Have your child name each picture (e.g., this one is a kitchen)
3. Ask your child if each space is easy or hard for listening.
4. Based on their answers have your child glue the image under the correct emoji
5. Finally, look at the spaces under “hard to listen” and discuss possible strategies with your child on how they can improve their ability to listen in these difficult areas (e.g., asking for help etc.)

 It's easy to listen here	 It's hard to listen here